



**REGIONAL SPECIALISED METEOROLOGICAL CENTRE-TROPICAL CYCLONES, NEW DELHI
TROPICAL WEATHER OUTLOOK**

DEMS-RSMC TROPICAL CYCLONES NEW DELHI DATED 28.09.2023

TROPICAL WEATHER OUTLOOK FOR NORTH INDIAN OCEAN (THE BAY OF BENGAL AND THE ARABIAN SEA) VALID FOR NEXT 168 HOURS ISSUED AT 0600 UTC OF 28.09.2023 BASED ON 0300 UTC OF 28.09.2023.

BAY OF BENGAL:

AN UPPER AIR CYCLONIC CIRCULATION EXTENDING UPTO MID TROPOSPHERIC LEVEL LAY OVER MYANMAR AND ADJOINING EASTCENTRAL BAY OF BENGAL AT 0300 UTC OF TODAY, THE 28TH SEPTEMBER, 2023.

UNDER ITS INFLUENCE, A LOW PRESSURE AREA IS LIKELY TO FORM OVER EASTCENTRAL AND ADJOINING NORTHEAST BAY OF BENGAL DURING NEXT 24 HOURS. THEREAFTER, IT IS LIKELY TO BECOME WELL MARKED LOW PRESSURE AREA AND MOVE NORTHWESTWARDS TOWARDS NORTH ODISHA AND ADJOINING WEST BENGAL COASTS DURING SUBSEQUENT 48 HOURS.

SCATTERED TO BROKEN LOW AND MEDIUM CLOUDS WITH EMBEDDED INTENSE TO VERY INTENSE CONVECTION LAY OVER EAST & SOUTHWEST BAY OF BENGAL, ANDAMAN SEA, ARAKAN COAST, TENASSERIM COAST AND GULF OF MARTABAN. SCATTERED LOW AND MEDIUM CLOUDS WITH EMBEDDED ISOLATED MODERATE TO INTENSE CONVECTION LAY OVER NORTHWEST BAY OF BENGAL.

PROBABILITY OF CYCLOGENESIS (FORMATION OF DEPRESSION) DURING NEXT 168 HRS:

24 HOURS	24-48 HOURS	48-72 HOURS	72-96 HOURS	96-120 HOURS	120-144 HOURS	144-168 HOURS
NIL	NIL	NIL	NIL	NIL	NIL	NIL

ARABIAN SEA:

BROKEN LOW AND MEDIUM CLOUDS WITH EMBEDDED INTENSE TO VERY INTENSE CONVECTION LAY OVER EASTCENTRAL ARABIAN SEA. SCATTERED LOW AND MEDIUM CLOUDS WITH EMBEDDED MODERATE TO INTENSE CONVECTION LAY OVER GULF OF CAMBAY, SOUTHEAST ARABIAN SEA, LAKSHADWEEP ISLANDS AREA AND COMORIN AREA.

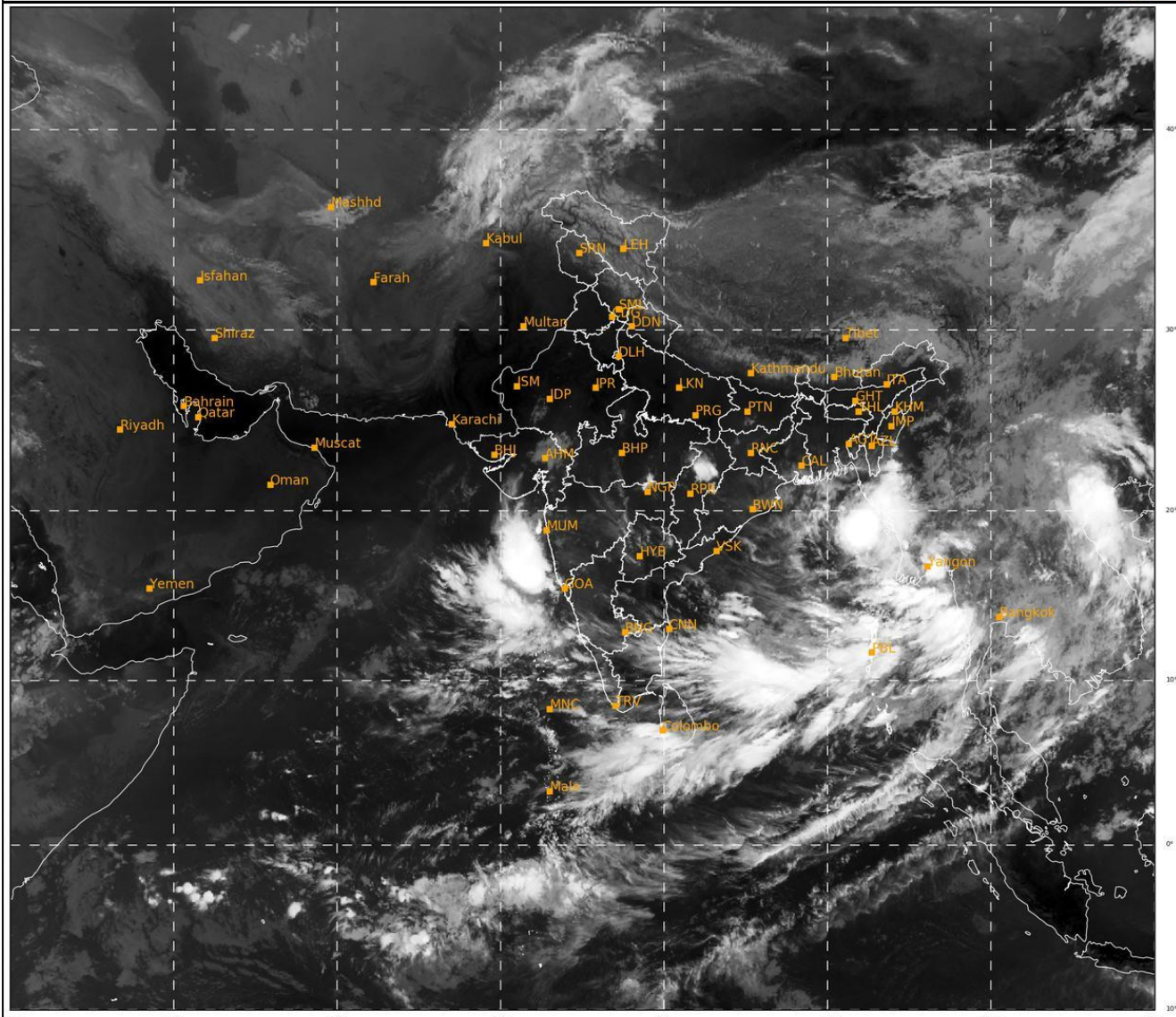
PROBABILITY OF CYCLOGENESIS (FORMATION OF DEPRESSION) DURING NEXT 168 HRS:

24 HOURS	24-48 HOURS	48-72 HOURS	72-96 HOURS	96-120 HOURS	120-144 HOURS	144-168 HOURS
NIL	NIL	NIL	NIL	NIL	NIL	NIL

Remarks: NIL

SAT : INSAT-3D IMG
IMG_TIR1 10.8 um
LIC Mercator

28-09-2023/(0300 to 0326) GMT
28-09-2023/(0830 to 0856) IST



456

936

IMD, DELHI

Cloud distribution: (a) Isolated: <25%, Scattered:25-50%, Broken: 51-75%, Solid:>75%, Convection Intensity: (a) Weak: Cloud Top Temperature (CTT) >-25°C, (b) Moderate: CTT: - 25°C to -40°C, (c) Intense: CTT: - 41°C to -70°C and (d) Very Intense: : Less than -70°C
PROBABILITY OF CYCLOGENESIS (FORMATION OF DEPRESSION):NIL: 0%, LOW: 1-33%, , MODERATE: 34-66% AND HIGH: 67-100%
This is a guidance Bulletin for WMO/ESCAP Panel Member countries. Visit respective National websites for Country specific Bulletins